

# FAIR CHECKLIST

## BEEF SHOW EXHIBITORS

### READ THE PREMIUM BOOK

This is where you will find all the details of what classes are offered this year, the show schedules, and new rules and guidelines. Make sure to read your species section AND the Livestock, Equine & Small Animal Rules.

CLICK HERE: <http://adams.colostate.edu/4h/fair/premium.htm>



### FAIR ENTRIES

This is where you will enter yourself and your animals in the classes/contests you wish to compete in at the 2020 ADCO 4-H Fair.

CLICK HERE: <https://adco.fairentry.com/Fair/SignIn/14819>



### DAY PEN REQUEST OR OPT-OUT

All shows will be one day, haul-in, haul-out shows. You may stall & show out of your trailer, or family day pens can be available for your animals in a barn upon request. Please indicate which you will be doing so we can accommodate.

CLICK HERE: <https://forms.gle/sQEfLAjayp6t6Rg48>



### SIGN UP FOR ARRIVAL TIMES

All vehicles and individuals must check in during arrival. The scheduling of arrival and/or weigh in times will allow us to process all families safely in accordance with social distancing guidelines.

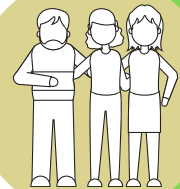
CLICK HERE: <https://10to8.com/book/gsuhlxmkgzevcumlzg/>



### DECLARE YOUR 2 PARENT/GUARDIANS

Each family with member(s) exhibiting will be allowed 2 parents/guardians to accompany. No non-exhibiting siblings/relatives will not be allowed on grounds in order to maintain strict guidance on participant numbers.

CLICK HERE: <https://forms.gle/gACB93JFN1uYFXKU9>



### OPT IN TO SHOW TEXT MESSAGES

Exhibitors will need to stay at their trailer, vehicle, or day pen area until their class is called to the on deck holding area. Please opt in to receive show day text messaging on up to 2 phones by:

Downloading the REMIND APP and entering beef class code: 4bb9gk

